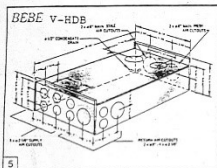


HEAT EXCHANGER

Construction

The heat exchanger is of a predominantly counterflow type, with a polyvinyl chloride thermoformed parallel plate core. The total surface for heat transfer is 160 sq. ft. The core is placed in a galvanized sheet metal case, which has a condensate drain system. A 1/2" diameter drain nipple is provided for placement on the exchanger, either on the rear panel, or on the side of the same end.



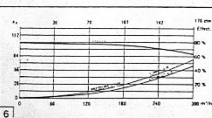
The heat exchanger has at both ends one compartment each for the supply air and the exhaust air. Cutoffs are indicated on plastic film covering pre-cut holes, for the proper placing of duct connectors.

The unit is designed to be installed either on a horizontal surface or suspended. In either case, the necessary slope for the condensate drainage is provided.

Dimensions: 20 1/4" x 38 1/2" x 11 7/16"
Weight: 29 lbs.

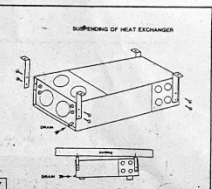
Effectiveness: 70 % at 90 cfm.

For pressure drop, see graph below:



Suspending the exchanger

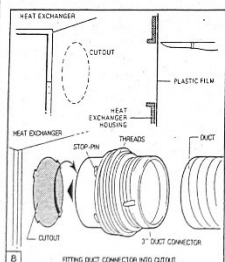
Four brackets and the necessary hardware are included for mounting the unit in a suspended position. Caution must be taken to assure that the surface from which the exchanger is suspended is perfectly horizontal.



Duct connectors

Duct connectors are not delivered installed on the exchanger. The installer chooses, according to the duct layout, the most appropriate holes, cuts out the plastic film, and places the corresponding connectors. Each connector is marked as to its use.

All connectors have threads for easily twisting duct on.

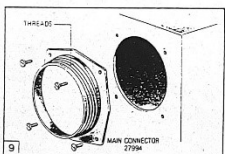


Main duct connectors (6")

There are 2 possibilities each for placing the fresh air and stale air main duct connectors:

- on the rear panel,
- on the top of the same end.

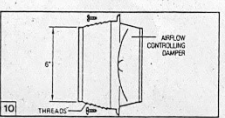
The main connectors, made of plastic, must be attached with 4 screws.



Main duct connectors (6") for kitchen

The kitchen duct connector made of plastic, has an airflow controlling damper which allows the exhaust rate in the kitchen to be more than doubled when the high speed fan is used.

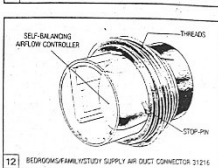
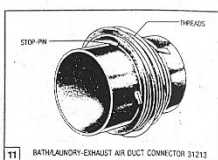
This connector may be placed either, on the front panel or the side of this end, and must be attached with screws.



Duct connectors (3") for exhaust air from baths/laundry

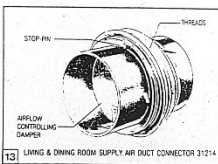
These connectors are made of plastic and come without any airflow controlling device. There are 4 possibilities for placing these connectors:

- 2 on the front panel of the heat exchanger
- 2 on the side of the same end.



Duct connectors (3") for supply air to bedrooms/family/study/etc.

These connectors, made of plastic, also have patented BEBE self-balancing airflow controllers placed inside. This device maintains a constant airflow of 10 or 20 cfm in spite of fan speed changes and pressure drops in the system. As a result, no airflow balancing is ever necessary.



Duct connectors (3") for supply air to living and dining rooms

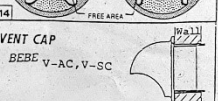
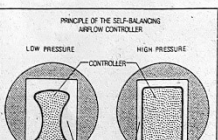
These connectors have an airflow controlling damper designed to allow, when needed, an increase in the airflow rate in the living and dining rooms by use of the higher fan speed.

Low speed: 15 cfm per connector.

High speed: 40 cfm per connector.

For the bedrooms/family/study/etc., living and dining room connectors, there are 8 possibilities on the exchanger:

- 4 on the front panel,
- 4 on the side of the same end.



El duct connector (3")

If there is not enough lateral space for a standard 3" connector, the el connector may be used. It is still necessary, however, to place a standard connector between the el and duct.

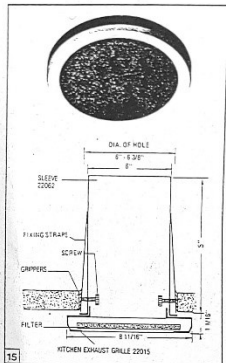
KITCHEN EXHAUST AIR OUTLET

The kitchen outlet grille is made of plastic and is delivered with a washable filter.

For mounting the outlet grille, a special 6" sheet metal sleeve is included. The sleeve has a fastening system which ensures an easy installation.

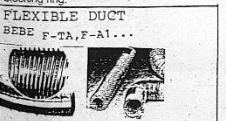
The outlet grille is made to slide snugly into the sleeve.

The airflow is controlled by a special airflow controlling damper placed in the duct connector (see paragraph on main duct connectors for kitchen).

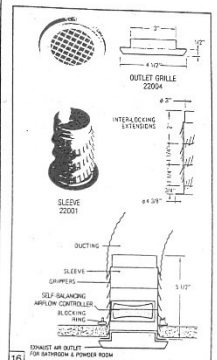


BATHROOM AND LAUNDRY EXHAUST AIR OUTLETS WITH SELF-BALANCING AIRFLOW CONTROLLERS

These air outlets have a grille made of beige plastic, and are furnished with a specially designed 3" polypropylene sleeve which has 3 interlocking extension parts. The sleeve may thus be shortened, or even lengthened, depending on ceiling or partition covering thickness. The sleeve is held into place by a blocking ring.



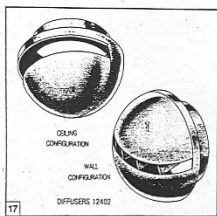
The sleeve have self-balancing airflow controllers inside. They assure a constant airflow even when the fan is switched to high speed, and despite pressure variations in the system. Thus, no airflow balancing is ever necessary.



BEDROOM, DINING AND LIVING ROOM SUPPLY AIR INLETS/DIFFUSERS

These intake/air diffusers are made of white plastic, and are installed using the same sleeve as above. The configuration of the diffuser can be easily changed and thus be ceiling or wall mounted.

Airflow rates are controlled by the corresponding duct connectors as explained previously.



OPTIONAL ACCESSORIES

The following articles may be ordered to complete the installation:

- 3" diameter flexible duct in lengths of 20 feet,
- 6" diameter flexible duct in lengths of 20 feet,

- flat rigid PVC duct (1 5/8" x 4") in lengths of 9' 10",
- 3" diameter insulated duct in lengths of 20 feet,
- 6" diameter insulated duct in lengths of 20 feet,
- duct accessories,
- intake/exhaust vents,
- roof cowls,
- 0-2 hour timer,
- filter for 6" diameter duct runs,
- sound absorber for 3" duct runs, for wall noise absorption is 10 db (A).

